

DON GNU - WALK-MAN

TECHNICAL RIDER

This is a standard rider. The venue shall provide the below technical facilities, excluding the following items that Don Gnu brings:

- scenography**
- plank support**
- 4x LED color wash**
- video projector**

If the venue experiences difficulty procuring the necessary technical equipment, an amended agreement can be made through dialogue with Don Gnu.

STAGE

Minimum: 8m W, 8m D, 4m H

Preferable: 10m W, 10m D, 5m H

Black dance vinyl

Black molton covering back wall upstage behind p64 led zooms or black walls

Black molton covering side walls, or black side walls.

10 side legs - see light plot. For small venues consider with DON GNU if legs are necessary.

DIMMERS, DMX AND POWER

9x 2kW DIMMERS on floor.

27x 2kW DIMMERS on truss.

1x 2kW DIMMER at control.

1x DMX output connection on floor at Hazer upstage, stage right.

1x DMX output connection on truss at 7m upstage.

1x DMX input connection at CONTROL

1x 10a shucko power for Hazer on floor upstage, stage right.

1x 10a shucko power for RGB wash on truss 7m upstage.

1x 10a shucko power for LED p64 zoom on floor upstage.

1x 10a shucko power socket at CONTROL

LIGHT

12x 1kW PAR64 CP62

8x 50° profiles 750w-1kW on floorstands.

5x 25-50° profiles 750W-1kW

2x 25-50° profiles 750W-1kW w/201 filter

1x 15-30° profile 750W-1kW w/iris on followspot yoke at control.

8x 10-40° (or similar range) 1k fresnels w/barndoors.

1x 15-30° 750W-1kW profile w/iris

14x 11-35° 100W LED PAR zoom on floorstands. DON GNU always brings.

4x LED color wash. DON GNU always brings.

1x Hazer. DON GNU always brings.
1x Fan. DON GNU always brings.
All necessary cabling.

VIDEO

-Video Beamer at control. If control far from stage, then beamer in rig at 13m from downstage edge
-Lens with zoom range that reaches at least 1:1.5 at widest.

SOUND

-LR xlr/jack from DON GNU soundcard to venue mixer or DON GNU's mixer.
-2 speakers (1 stage left and 1 stage right) and sub.
-2 monitors on stage, downstage in wings stage left and right.
-All necessary cabling.

SCENOGRAPHY

Scenography brought by DON GNU will be
-16 wooden boards (2,5m x 0,5m)
-One plank support (W-7m x D-1m x H-2m)

TIME SCHEDULE AND STAFF FOR LOAD, RIG & STRIKE

12:00 - 13:00	Unload the van	(2 technicians)
13:00 - 15:00	Rig lights	(2 technicians)
15:00 - 16:00	Focus Lights	(2 technicians)
16:00 - 16:30	Break	
16:30 - 17:00	Check Sound	
18:00 - 19:00	Tech check & Dry run	
19:00 - 20:00	Warm up	
20:00 - 21:00	Performance	
21:00 - 22:00	Strike	(2 technicians)

2 technicians help out 4 hours in start, and 1 hour for strike. No non-professional stagehands. At least one of the technicians should be familiar with the venue's technical facilities for light, sound and power. Or the venue will provide a person at site that is familiar with the venue.

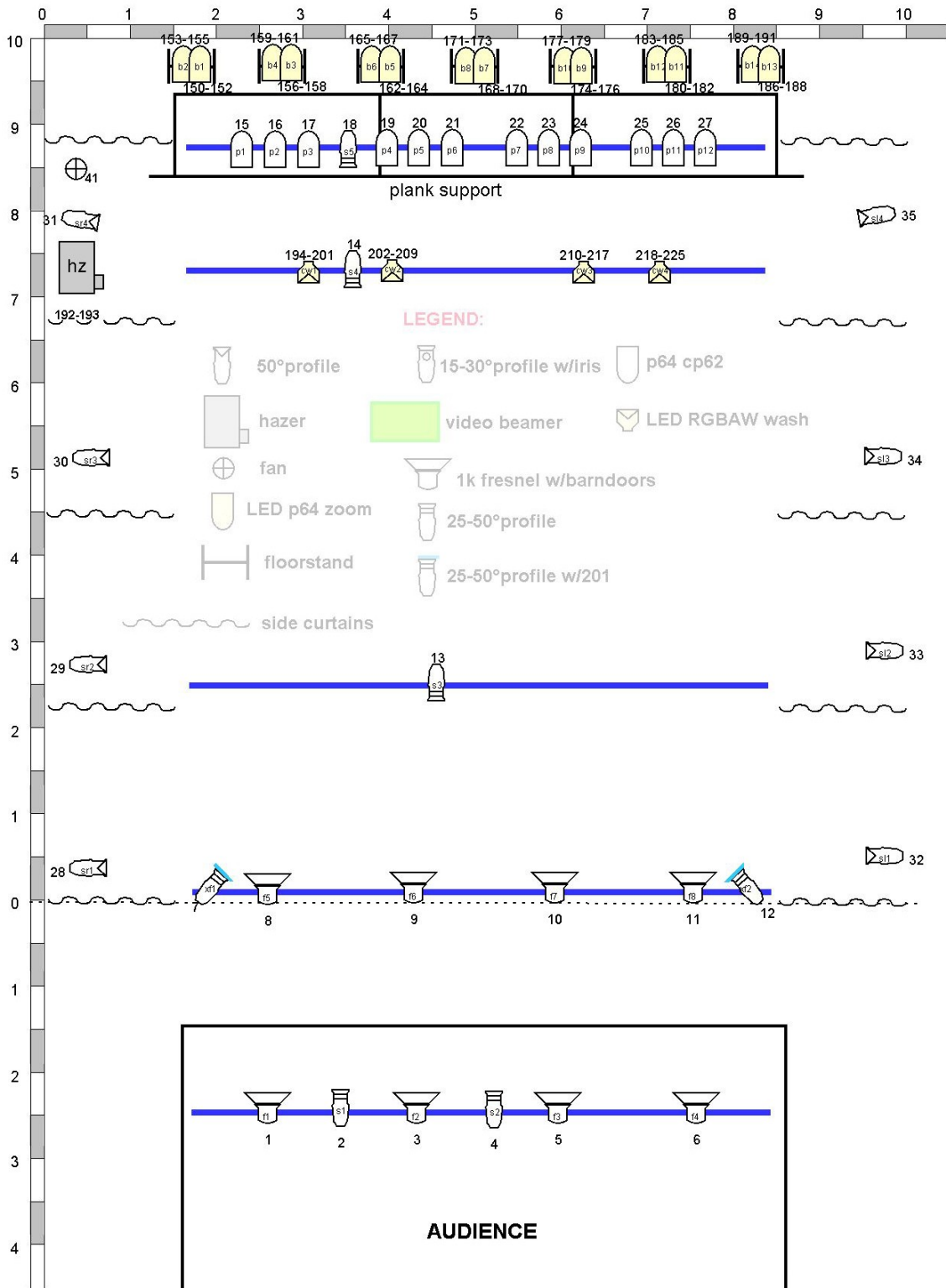
The time schedule will depend on the venue, and changes may occur. If lights and sound are pre-rigged, the schedule can be adjusted and shortened accordingly.

CONTACT:

Christoffer Brekne
brekne@dongnu.dk
+45 41 57 13 61

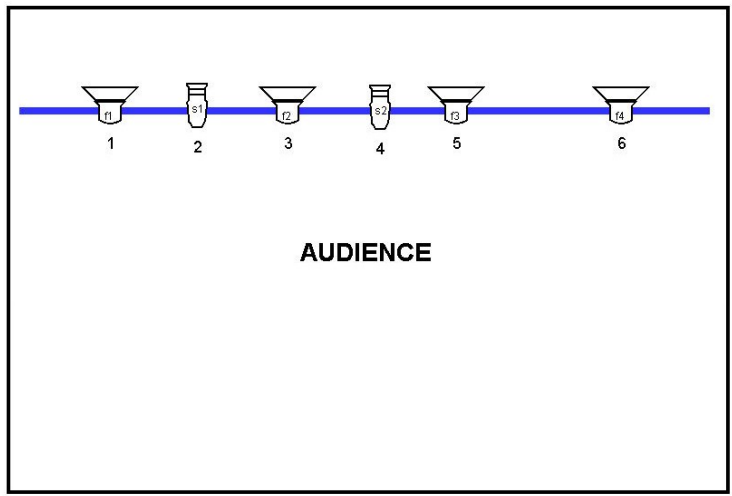
FLOOR TRUSS LEGEND

WALK-MAN light plot



LEGEND:

- 50° profile
- 15-30° profile w/iris
- p64 cp62
- hazer
- video beamer
- LED RGBAW wash
- fan
- 1k fresnel w/barndoors
- LED p64 zoom
- 25-50° profile
- 25-50° profile w/201
- floorstand
- side curtains



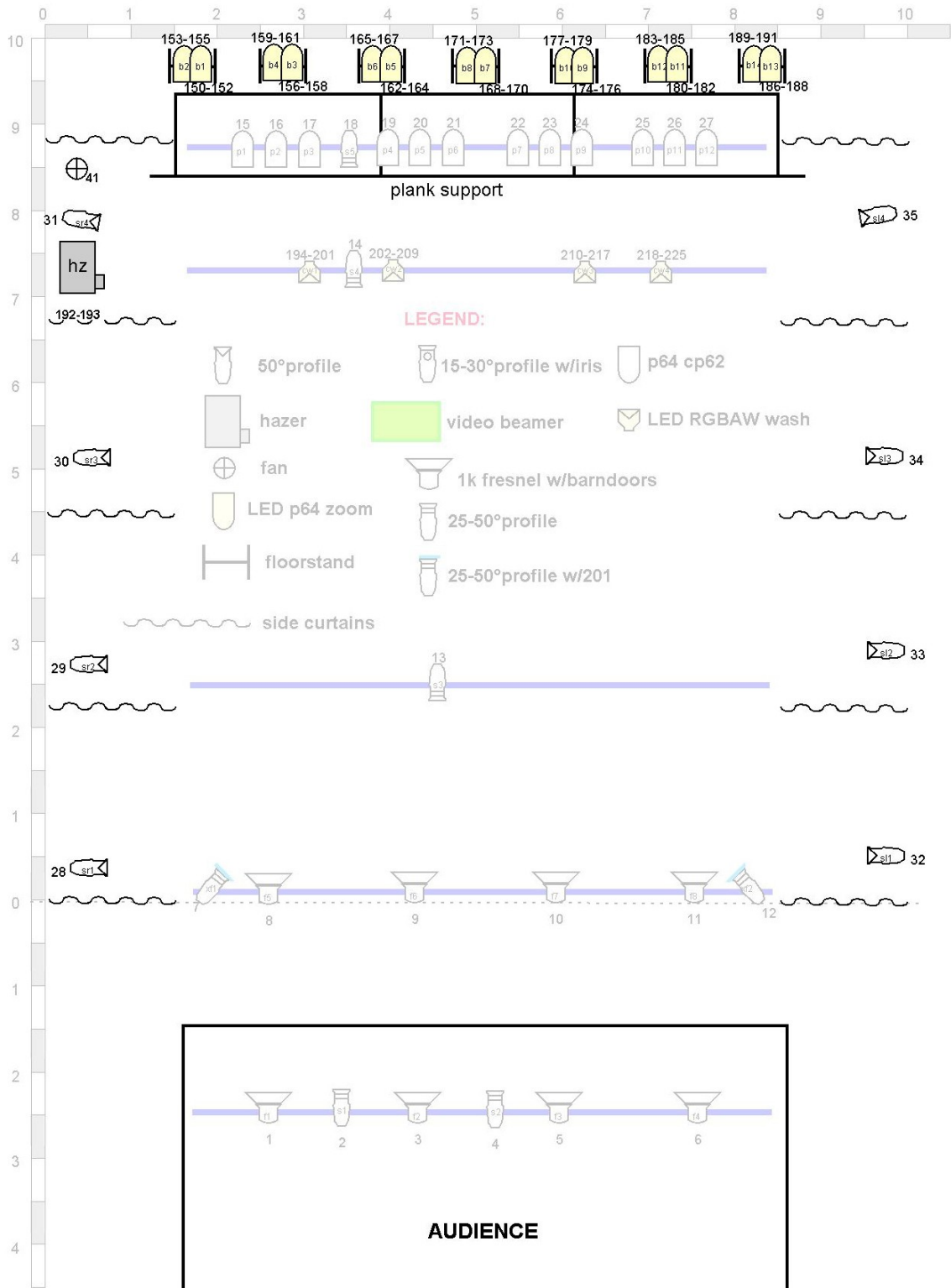
CONTROL

36

audience: 37-40

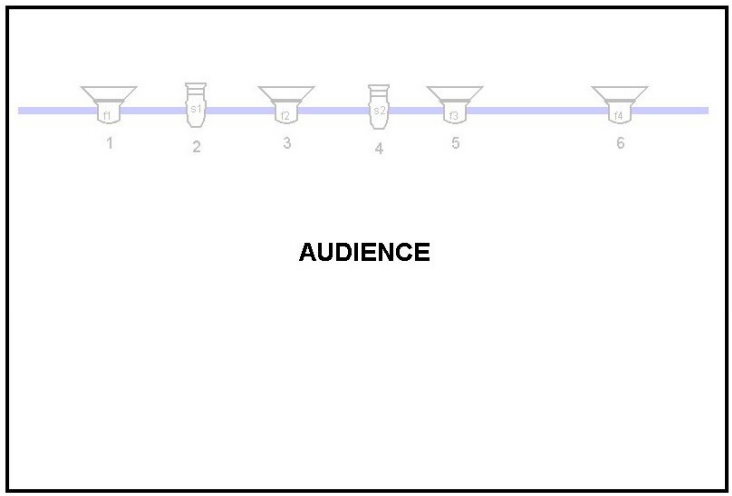
FLOOR TRUSS LEGEND

WALK-MAN light plot



LEGEND:

- 50° profile
- hazer
- fan
- LED p64 zoom
- floorstand
- side curtains
- 15-30° profile w/iris
- video beamer
- 1k fresnel w/barndoors
- 25-50° profile
- 25-50° profile w/201
- p64 cp62
- LED RGBAW wash



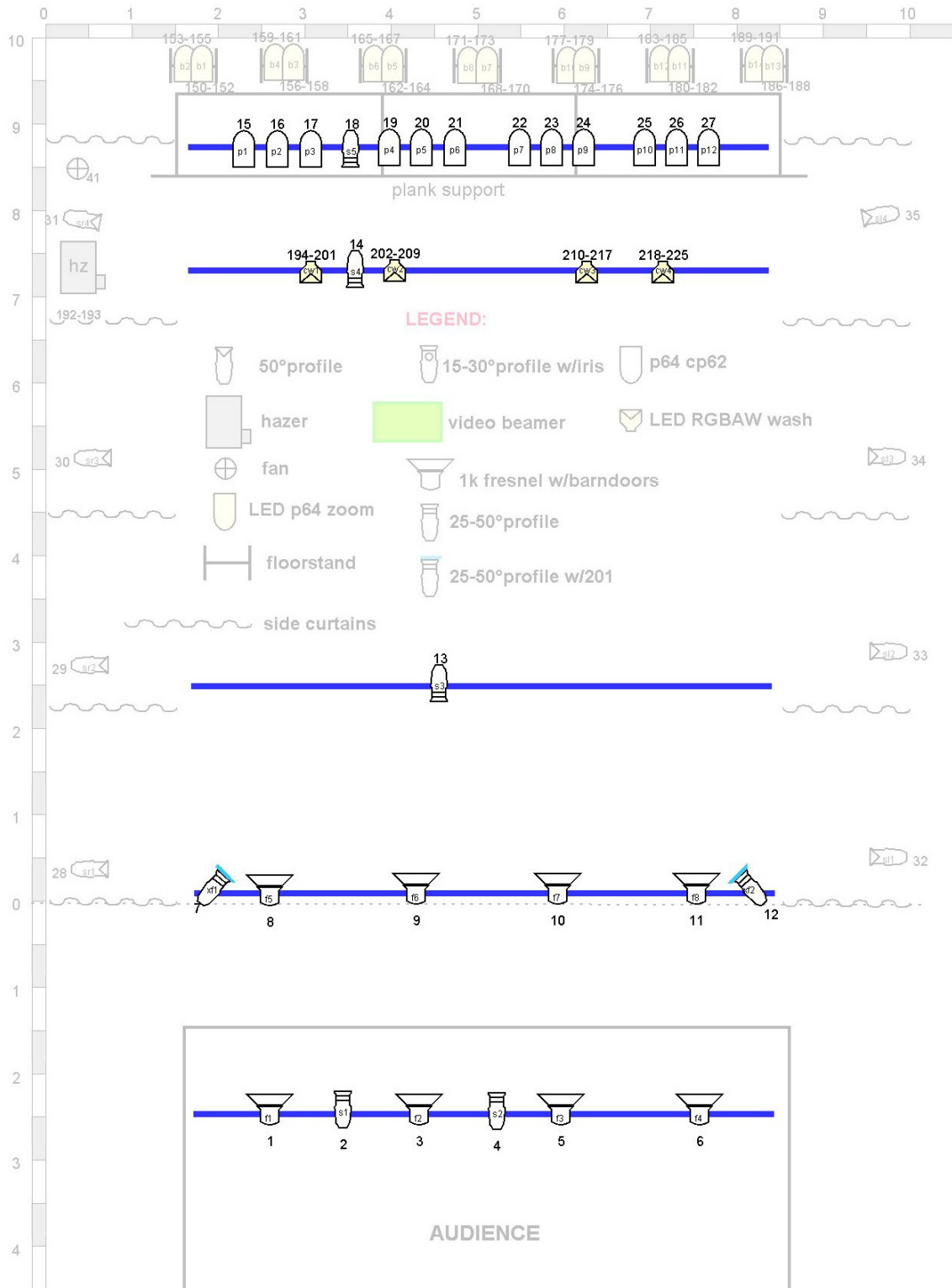
CONTROL

36

audience: 37-40

FLOOR TRUSS LEGEND

WALK-MAN light plot

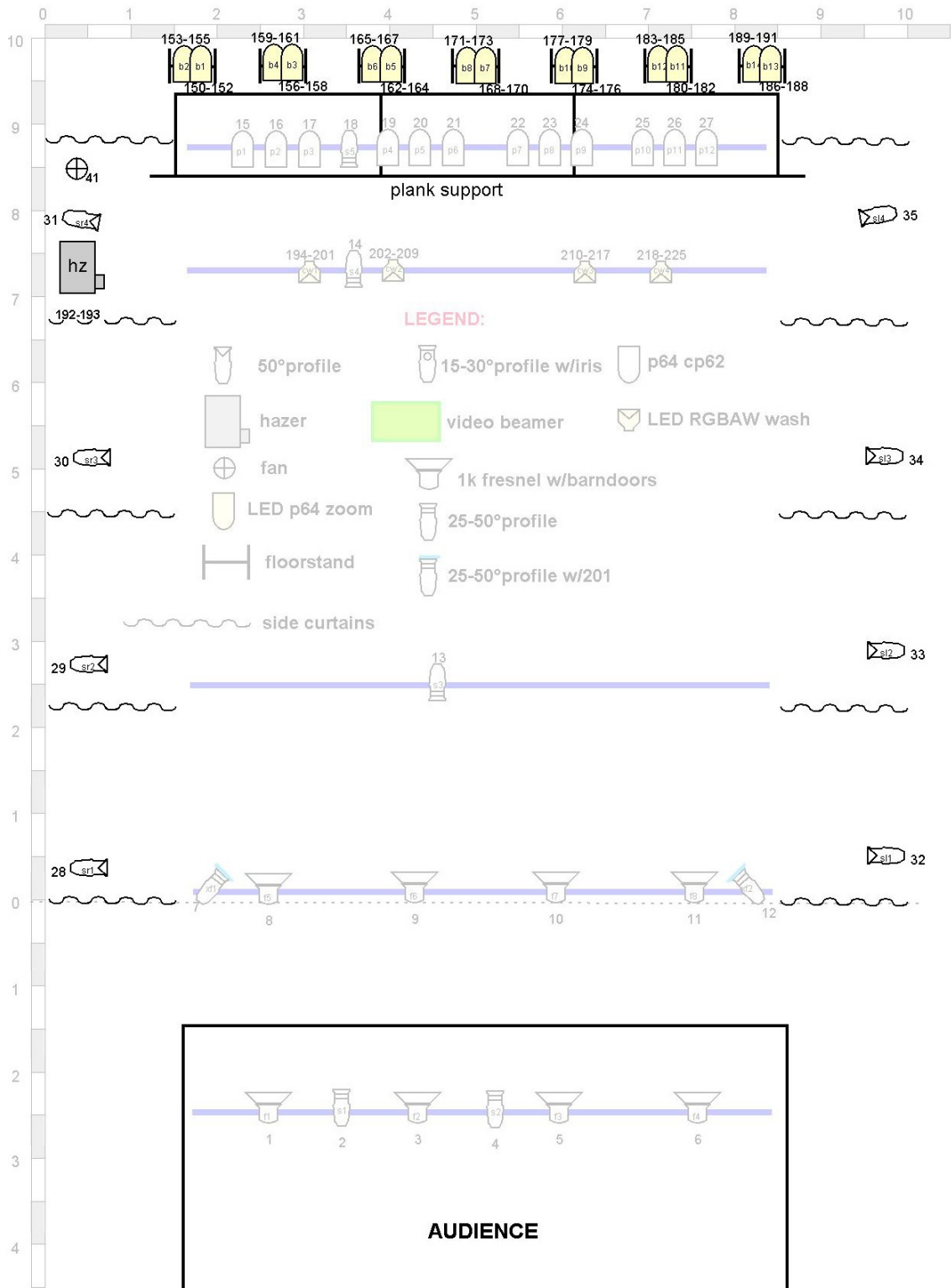


CONTROL

audience: 37-40

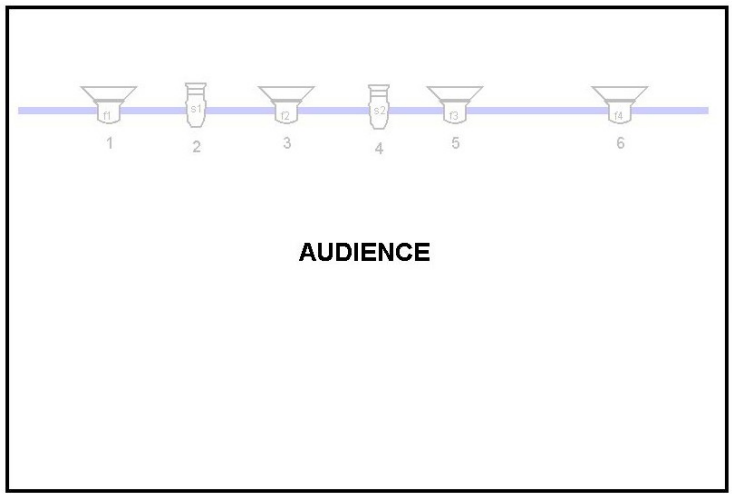
FLOOR TRUSS LEGEND

WALK-MAN light plot



LEGEND:

- 50° profile
- 15-30° profile w/iris
- p64 cp62
- hazer
- video beamer
- LED RGBAW wash
- fan
- 1k fresnel w/barndoors
- LED p64 zoom
- 25-50° profile
- floorstand
- 25-50° profile w/201
- side curtains



CONTROL 36

audience: 37-40